

# NEW YORK family

MARCH 2020  
established 1986

NEWYORKFAMILY.COM

## Goodbye Plastic

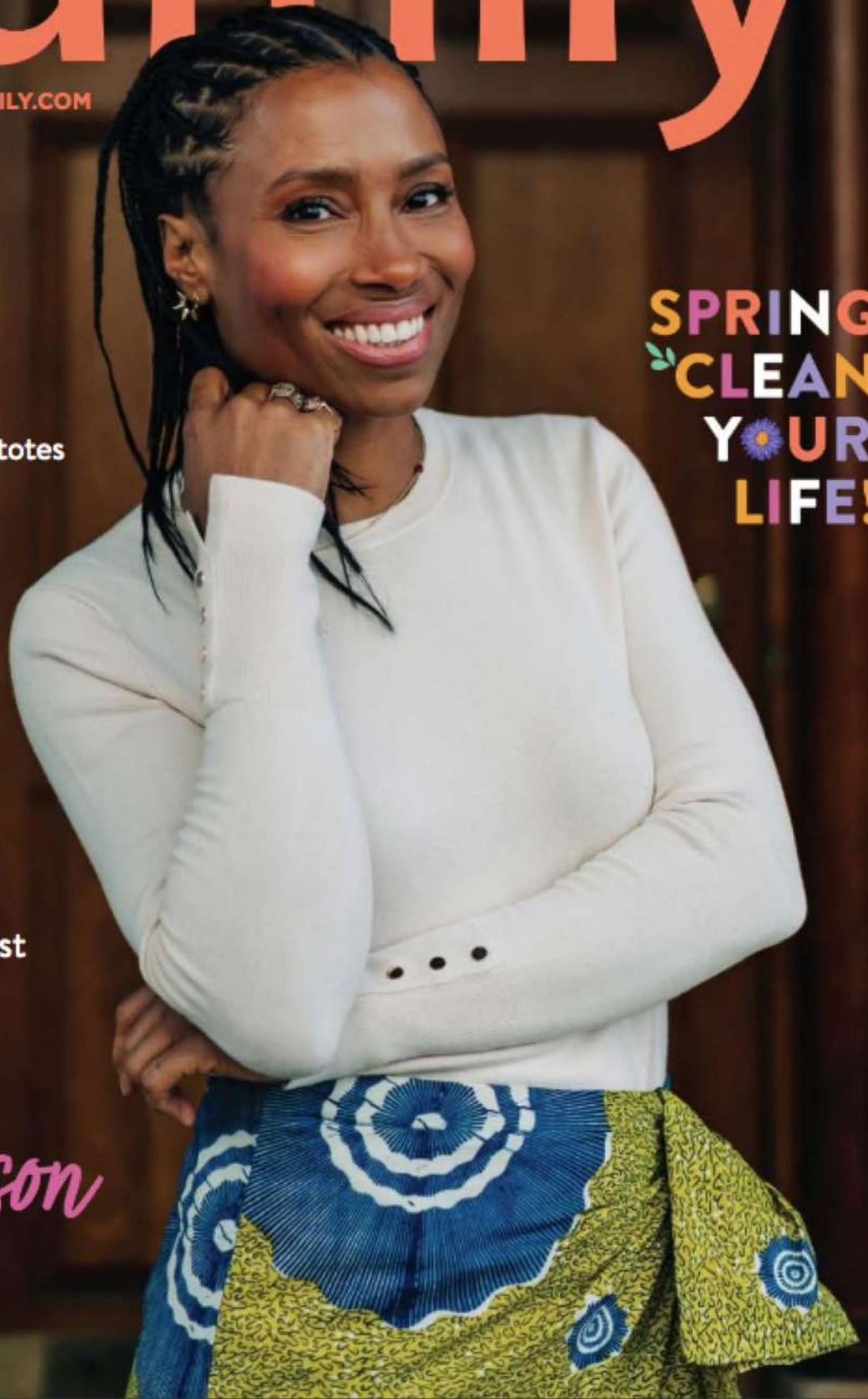
The best reusable totes

SPRING  
CLEAN  
YOUR  
LIFE!

## Family-Friendly APARTMENT BUILDINGS

The Bold and  
the Brave Activist

Jodie  
Patterson



# Hot PROPERTIES

Thirteen great places for family living in the city

BY OLGA UZUNOVA

Finding the best living space in NYC has gotten easier with these amazing properties that go the extra mile when it comes to accommodating families. Whether you are looking for a living space with a rooftop, a state of the art children's playroom, or an apartment building located surrounded by fantastic school choices, here are 13 great properties you won't regret checking out if you're new to NYC or moving within the city.

## Downtown Manhattan: The Broad Exchange Building

Neighborhood: Financial District  
Address: 25 Broad Street  
The Broad Exchange Building, once the largest and most prestigious office building in New York City, is now a luxury condominium that launched sales earlier this year. The Broad Exchange is a pet and child-friendly building in the busy and popular Financial District. When the weather permits, enjoy the scenic rooftop space for fun parties, the shared outdoor kitchen, and BBQs with friends and family. Kids will love the outdoor playground and enjoy the indoor playroom featuring interactive play areas, educational toys and opportunities for making art.

## Downtown Manhattan: 77Greenwich

Neighborhood: Financial District  
Address: 77 Greenwich  
This luxury highrise is located in the heart of FiDi and has been designed as a safe haven for families who need a cozy nest in the bustle of the city. Cloud Club on the 77th floor is a zen space designed as the ultimate retreat from the city noise with a landscaped rooftop terrace with 360-degree views. Families can enjoy the observation deck on the 42nd floor with its outdoor kitchen and BBQ grills. Kids have space to create, interact, and play in the children's playroom with



The Kent, on the Upper East Side includes Camp Kent, an interactive indoor-outdoor playroom.

enhanced protections on the windows and other potential risk areas. 77 Greenwich is two blocks away from Battery Plaza which is perfect for family outdoor activities and walks along the Hudson river shore. Kids can enjoy the SeaGlass Carousel Amusement park and breathtaking views of the Statue of Liberty.

## Glenwood - multiple locations

[www.glenwoodnyc.com](http://www.glenwoodnyc.com)  
Make use of your uptown or downtown Glenwood building's amenity spaces. Each location provides a family-friendly environment perfect for growing families. Depending on location, Glenwood buildings offer playrooms, pools, and gyms which cater to the busy New York family. Downtown rush, Midtown entertainment, or Upper Manhattan family environment take your pick, and Glenwood's various portfolio of upscale apartment options will satisfy your needs.

## Brooklyn: One Clinton

Neighborhood: Brooklyn Heights  
Address: One Clinton St  
[www.oneclintonbk.com](http://www.oneclintonbk.com)  
One Clinton is an architectural beauty at the center of historic Brooklyn Heights. With direct access to Cadman Plaza Park, Whitman Park and a 10 min walk from the DUMBO area, this apartment building is perfect for families. Amenities include a sky lounge with full entertaining kitchen, bar, and terrace, children's center with indoor and outdoor active play areas and a screening room. A state-of-the-art branch of the Brooklyn Public Library will anchor the ground floor of One Clinton and presents a unique facility for book-lover residents.

## Manhattan: The Hayworth

Neighborhood: Upper East Side  
Address: 1289 Lexington Ave  
[thehayworthnyc.com](http://thehayworthnyc.com)  
In The Hayworth, you can find both



(Top) Incredible views at 77 Greenwich in the Financial District. (Above) A spacious layout at 45-45 Center Boulevard in Long Island City.

your family home and a center for the community. The world-class 92Y, in partnership with the Hayworth, will provide your children with music, acting, and drawing classes in the cheerful children's room. Apartments' interiors are designed by Lee Mindel of SheltonMindel. Each

residence features an expansive gallery wall and has loft-like proportions with grand windows that let all the sunshine in your home. The elegant oak parquet floors are stunning, and the open kitchens are big enough for the family brunch. If you decide to eat out there are plenty of options nearby

starting with Dig Inn right next door. The subway is a few steps away (4, 5 and 6 lines) and the local Whole Foods is a five minute walk away.

#### **Manhattan: The Kent**

Neighborhood: Upper East Side  
Address: 200 East 95th Street  
[thekentnyc.com](http://thekentnyc.com)

Residents of all ages will enjoy spacious apartments and a full suite of amenities, including The Sound Lounge, a music practice room designed by famous musician Lenny Kravitz, and Camp Kent, an interactive indoor-outdoor playroom. This coveted location is surrounded by everyday conveniences, including a three-story Whole Foods Market and small bodegas. Walking distance to the Museum Mile, the 92nd Street Y, and Asphalt Green make The Kent a perfect location for families. A big plus for parents looking for upstanding education choices, The Kent is surrounded by some of New York's best private and public schools- PS 77, The Hunter College Elementary School, The Windward School - Manhattan Lower and Middle Schools Diller-Quaile School of Music. The Kent is located between Carl Schurz Park and Central Park, with direct access to the Second Avenue subway (N,Q lines).