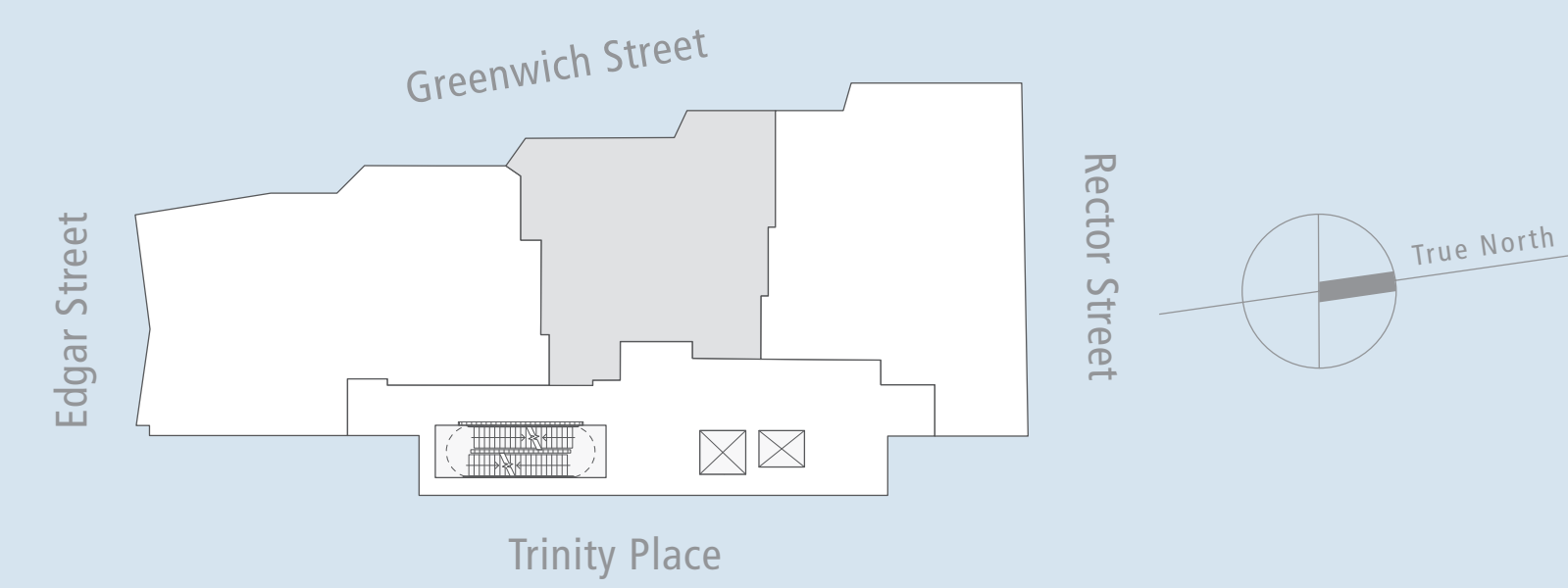
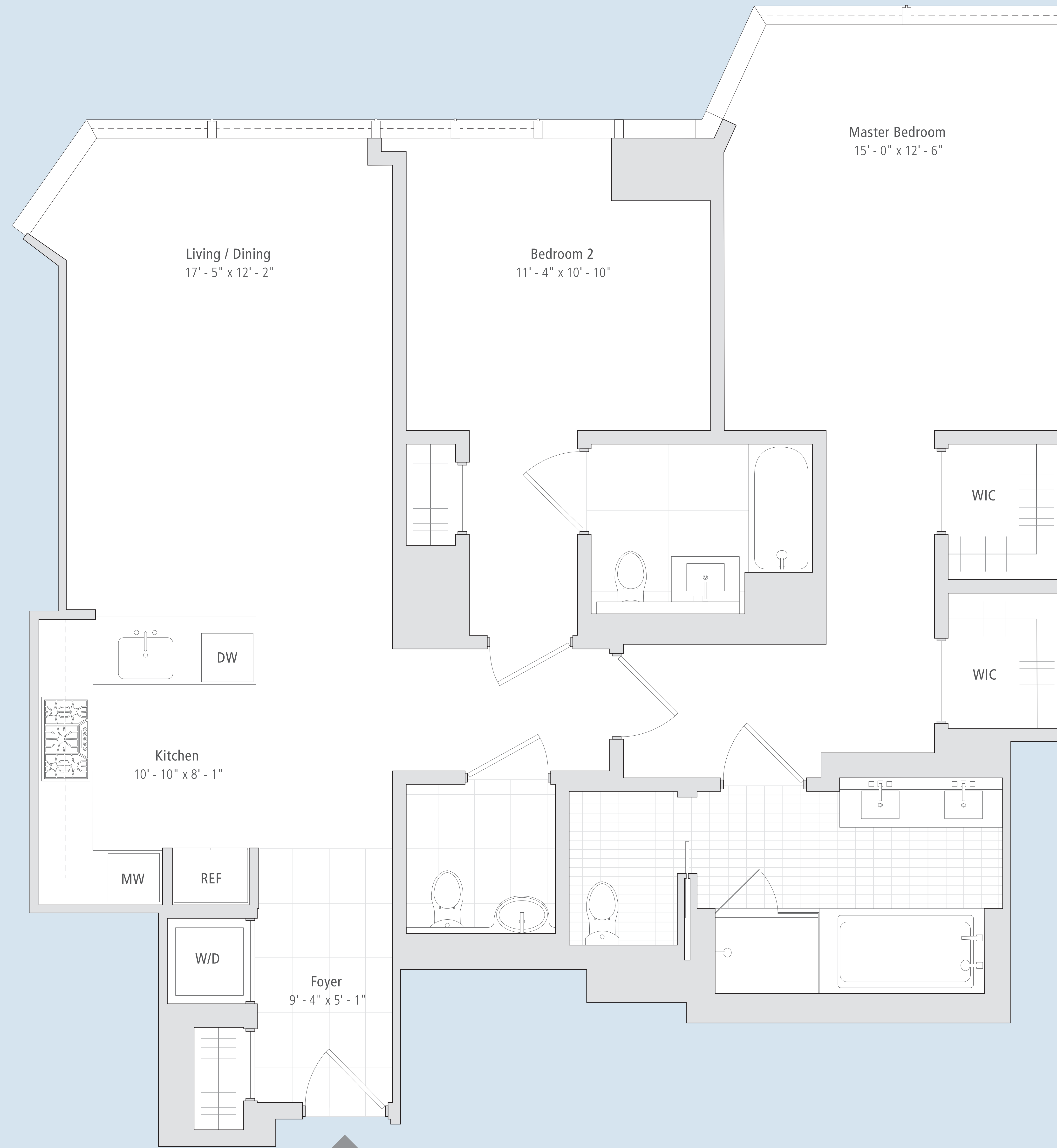


# Residence 36B

FLOOR 36  
2 BEDROOMS | 2 BATHS | POWDER ROOM



TRINITY PLACE HOLDINGS  
BRANDS BY RODE

DISCLAIMER: THE COMPLETE OFFERING DOCUMENT IS AVAILABLE FROM SPONSOR. ALL DIMENSIONS SHOWN ARE APPROXIMATE AND SUBJECT TO CONSTRUCTION VARIATIONS. SPONSOR RESERVES THE RIGHT TO MAKE CHANGES IN ACCORDANCE WITH THE OFFERING PLAN. EACH UNIT SHOULD BE REFERRED TO AS A UNIT AND THE FOOTPRINT TO A UNIT. SECTION OF THE OFFERING PLAN FOR FURTHER DETAILS. ALL RANGES AND APPLIANCES SHOWN ARE FOR ILLUSTRATION PURPOSES ONLY. ALL DIMENSIONS TO FACE UNLESS OTHERWISE NOTED. PROSPECTOR SHOULD CONSULT WITH ARCHITECT FOR COMPLETE TERMS OF THE OFFERING PLAN. FURTHER DETAILS AS TO THE QUALITY AND QUANTITY OF MATERIALS, APPLIANCES, EQUIPMENT, AND FINISHES TO BE INCLUDED IN THE UNIT, ARE SET FORTH IN THE OFFERING PLAN. SPONSOR: TRINITY PLACE HOLDINGS, LLC, 340 NASSAU AVENUE, NEW YORK, NY 10017. ALL RIGHTS TO CONTENT, PHOTOGRAPHY, AND GRAPHICS RESERVED TO TRINITY PLACE HOLDINGS, LLC.

